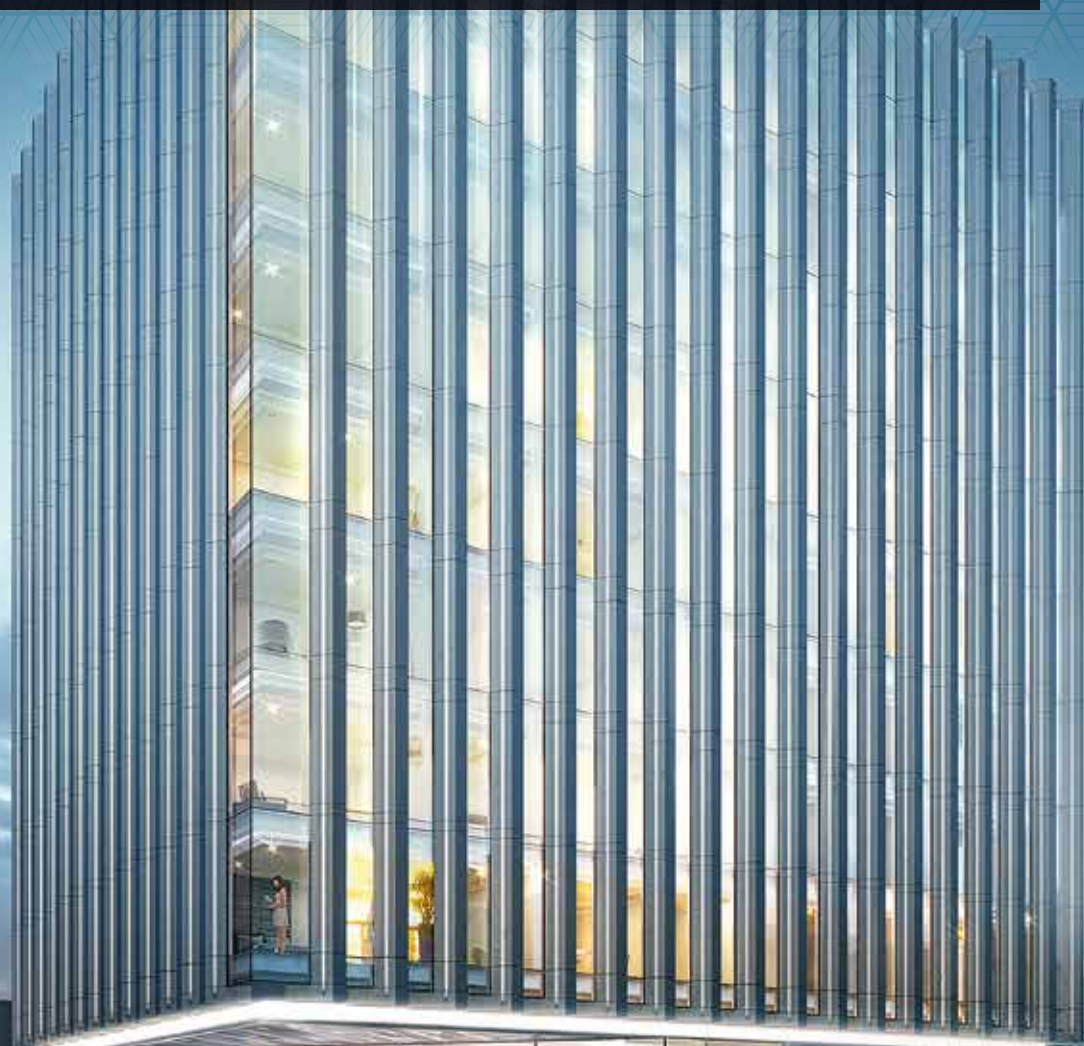


235 UNION STREET SPECIFICATION SOUTHWARK, SE1



PART OF THE THE SEI COLLECTION

For all enquiries get in touch on **0300 200 0116**
or visit **www.wandlese1collection.com**

Brought to you by

wandle
NEW HOMES

www.wandle.com

235 UNION STREET SPECIFICATION

SOUTHWARK, SE1

For all enquiries get in touch on
0300 200 0116
or visit
www.wandlese1collection.com



Images is indicative of interiors

KITCHEN

- Howdens gloss white integrated units
- Electrolux stainless steel cooker hoods with Chomney extractor
- Electrolux stainless steel oven and hob
- Intergrated Electrolux fridge freezer
- Fitted Electrolux washer/dryer
- Integrated Electrolux dishwasher
- Howdens blackstone worktop
- Howdens Lamona stainless steel sink with chrome tap

BATHROOMS AND SHOWER ROOMS

- Kaldewei Eurowa White anti-slip bath
- Hansgrohe Logis single lever chrome Tap
- W.C Villeroy & Boch wall mounted white WC
- White Villeroy & Boch hand basin with white Alpin Villeroy & Boch tap
- GROHE Bath/shower mixer
- Instinct Eco bar shower
- Grohe chrome shower head
- Fixed glass shower screen
- Shaver socket
- Heated chrome towel rail radiator
- Mirror above hand basin

GENERAL AND COMMON AREAS

- White sockets & switches throughout
- Entrotek video door entry system
- Mains interlinked smoke and CO2 detectors
- LED lighting ceiling fittings throughout
- External lighting
- Communal lighting
- Extract fans

FLOORING AND FINISHES

- White solid core internal doors
- Amtico vinyl weathered oak floor tiles throughout except bathrooms
- Walls and ceilings in white matt emulsion throughout except bathrooms
- Woodwork in white gloss

*Your attention is drawn to the fact that it may not be possible to obtain the products as referred to in the specification. In such cases a similar alternative will be produced.

THE SE1 COLLECTION

www.wandlese1collection.com

wandle
NEW HOMES

Wandle give notice that (1) these particulars do not constitute any part of an offer or contract, (2) all statements contained within these particulars are made without responsibility on the part of Wandle or the vendor/landlord, (3) whilst made in good faith, none of the statements contained within these particulars are to be relied upon as a statement of representation or fact, (4) any intending purchaser/tenant must satisfy him/herself by inspection or otherwise as to the correctness of each of the statements contained within these particulars, (5) the vendor/landlord does not make or give either Wandle or any person in their employment any authority to make or give representation or warranty whatsoever in relation to this property. Photographs are for illustrative purposes only and layout and specification maybe subject to change at any time. © 2016 Wandle. All rights reserved.

